

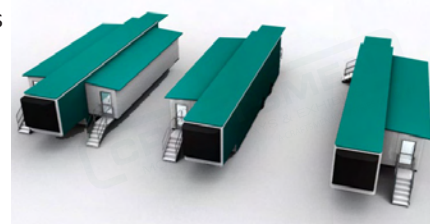


LAST LOOK PROGRAM



Concept #10: Versatile Expandable Trailer

Craftsmen's Concept: Versatile Expandable Trailer begins as Craftsmen's standard double expandable unit and converts into multiple set-up configurations. The strategically placed interior divider walls allow sections not in display mode to be concealed, while other sections are visible and in display mode. See the below examples for a B2B Display and Event Display.



B2B Vehicle Example:

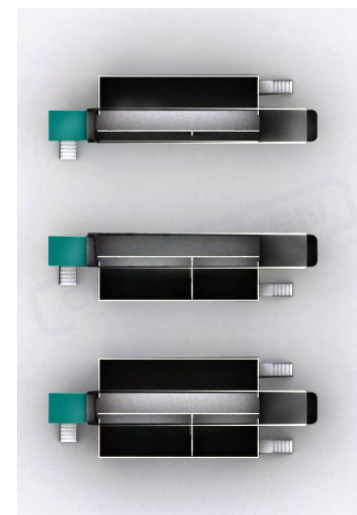
Possible Rooms: Product Showroom, Training/Classroom, and Conference/Meeting room

Uses: The Product Showroom can be deployed with or without the Training and Conference Room *OR* the Training and Conference Rooms can be deployed without the Product Showroom.

Event Example:

Possible Rooms: Product Showroom, Training/Classroom, Theater

Uses: The display can convert to consumer style in the product showroom, the training/classroom can become a standing theater, and the conference/meeting room can become a demo or interactive area.



Basics/Transport:

Size: 53' Drop Deck Trailer

Weight: Base Unit Est. 48,000 lbs

Requires full size 80,000 lb Cap, Dual Axle Tractor

Estimated Payload: 14,000 lbs

Set-Up:

Full Set-Up (Both Sides of Double Expandable Deployed)

Footprint: approx. 70'L x 30'D x 14'T

Est. Labor: 2 people, 4 hours

Equipment needed: None

Partial Set-Up (Either Single Side Deployed)

Footprint: approx. 70'L x 180'D x 14'T

Est. Labor: 2 people, 3 hours

Equipment needed: None



Includes:

- 53' Trailer
- Hydraulic Leveling, Hydraulic Side Canopies and Stages
- Hydraulic Room Enclosure Walls, Interior Divider walls, Stairs and Hand Rails
- 40 kW generator and base wiring, 15 tons- A/C
- Basic interior lighting, Basic floor finish
- Smooth Alum interior finish (single color), Smooth Alum exterior finish
- Single color Trailer skirting, Base single color paint
- Full wrap exterior Graphics for trailer (does not include roof)

Not Included:

- No Tractor
- No ADA Lift
- No Seating or Awnings
- No Interior Buildouts, Displays or Electronics



Call for pricing